

Figure 2.3.1 Estimated density distribution of one-year-old capelin (t/ nautical mile²) August - October 2004.

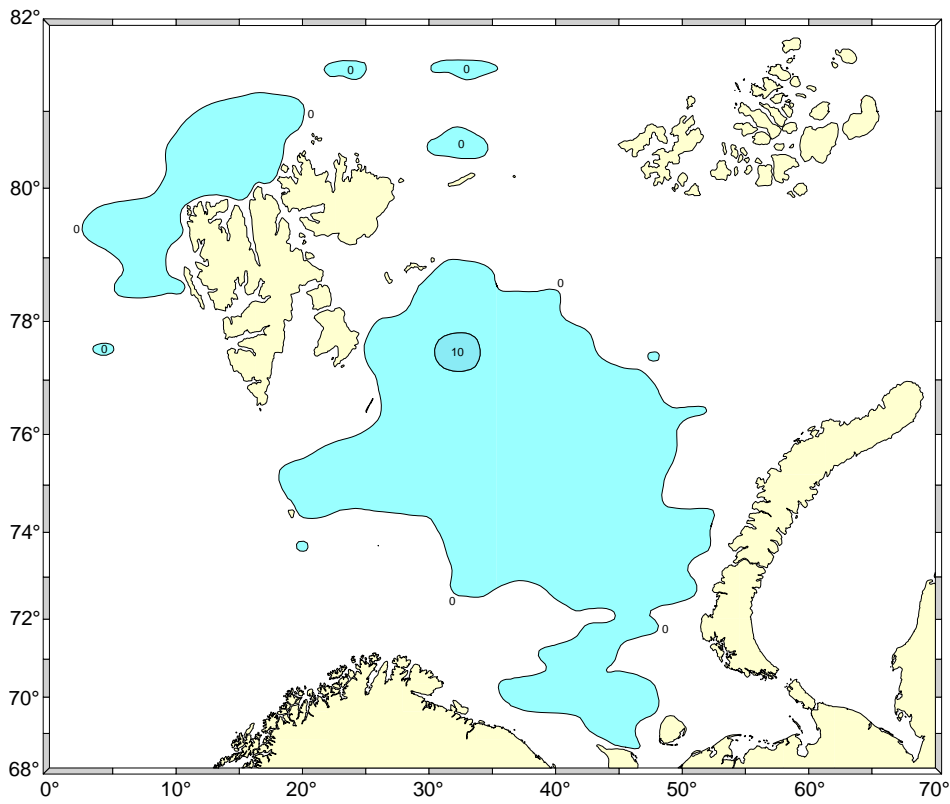


Figure 2.3.2 Estimated density distribution of two years old capelin (t/ nautical mile²) August - October 2004.

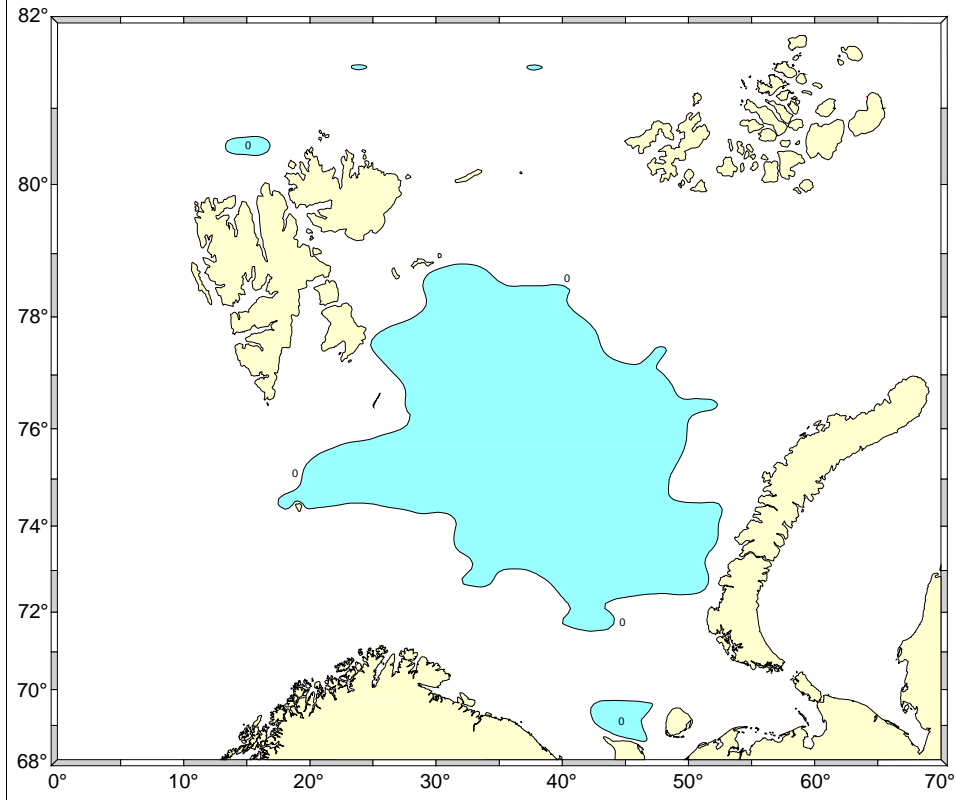


Figure 2.3.3 Estimated density distribution of three years old capelin (t/ nautical mile²) August - October 2004.

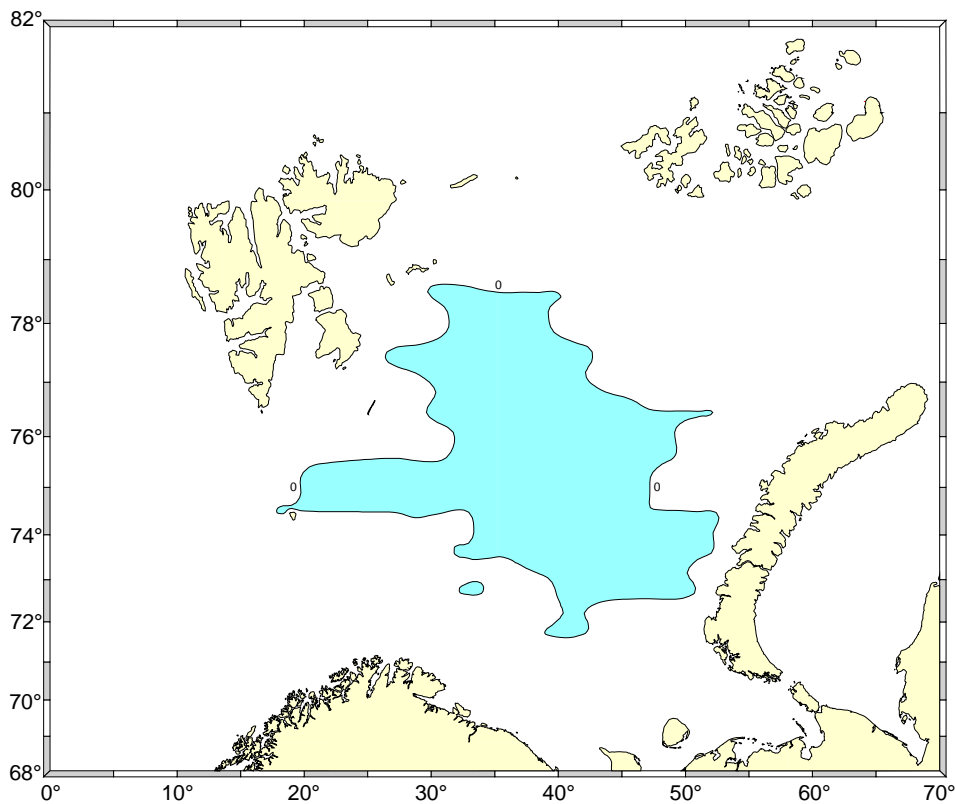


Figure 2.3.4 Estimated density distribution of four years old capelin (t/ nautical mile²) August - October 2004.

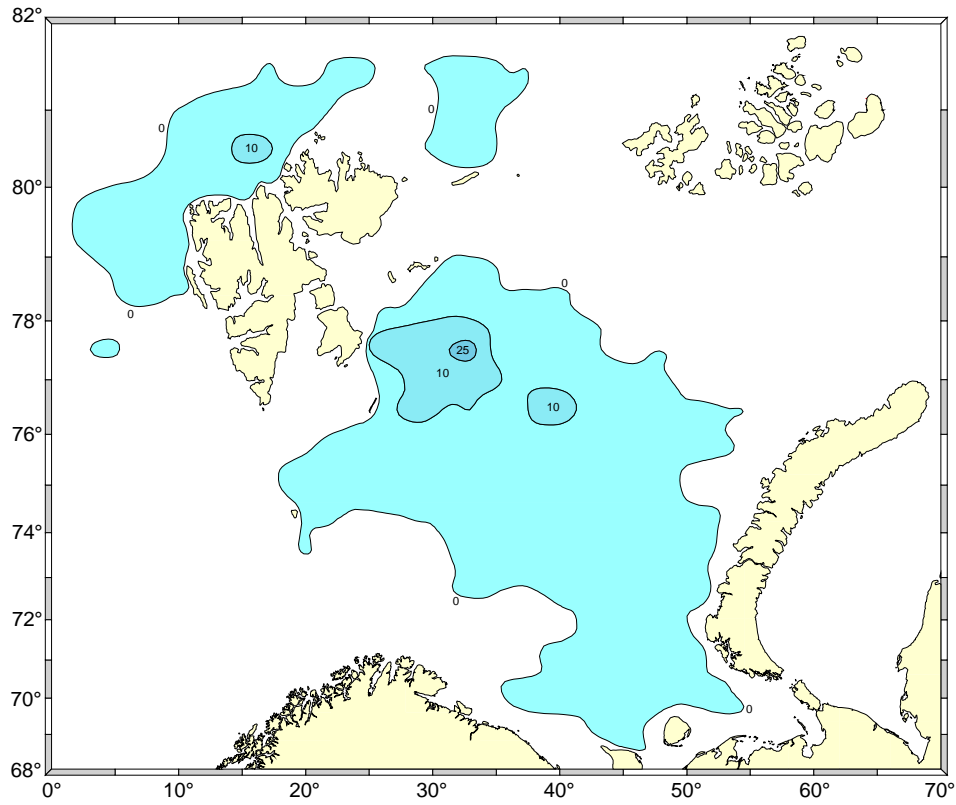


Figure 2.3.5 Estimated total density distribution of capelin (t/ nautical mile²) August - October 2004.

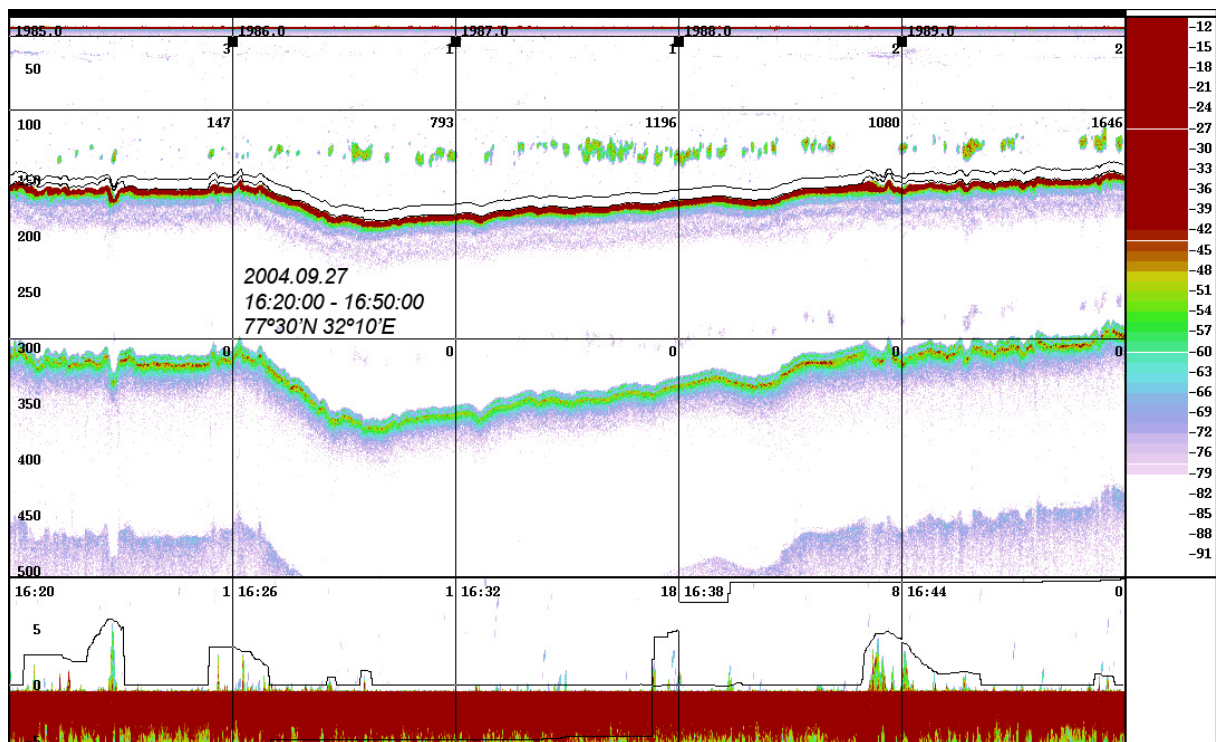


Figure 2.3.6 Echo-records of capelin in typical daytime registrations 27.09.2004. Echogram obtained at Johan Hjørt. See also figure 2.3.9 obtained immediately after this echogram.

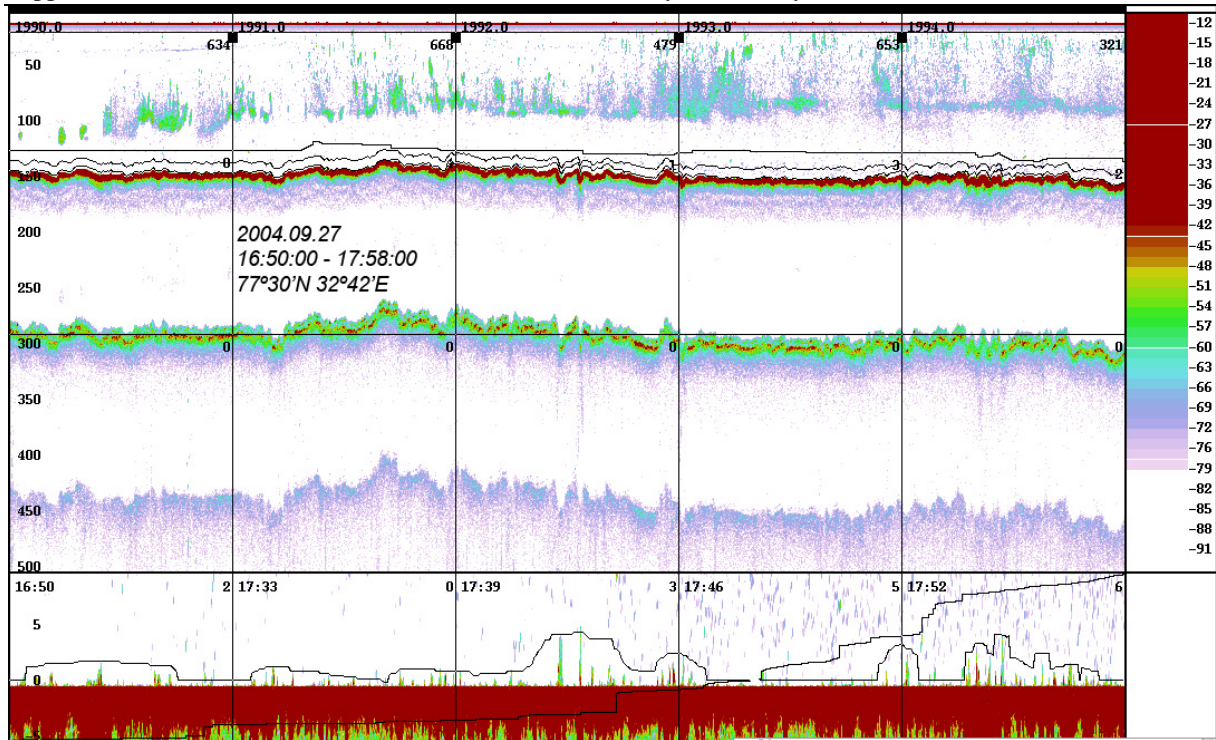


Figure 2.3.7. Echo-records of capelin in the transition phase between daytime schools and night time scattered distribution 28.09.2004. Echogram obtained at Johan Hjort. See also figure 2.3.8 obtained immediately before this echogram.

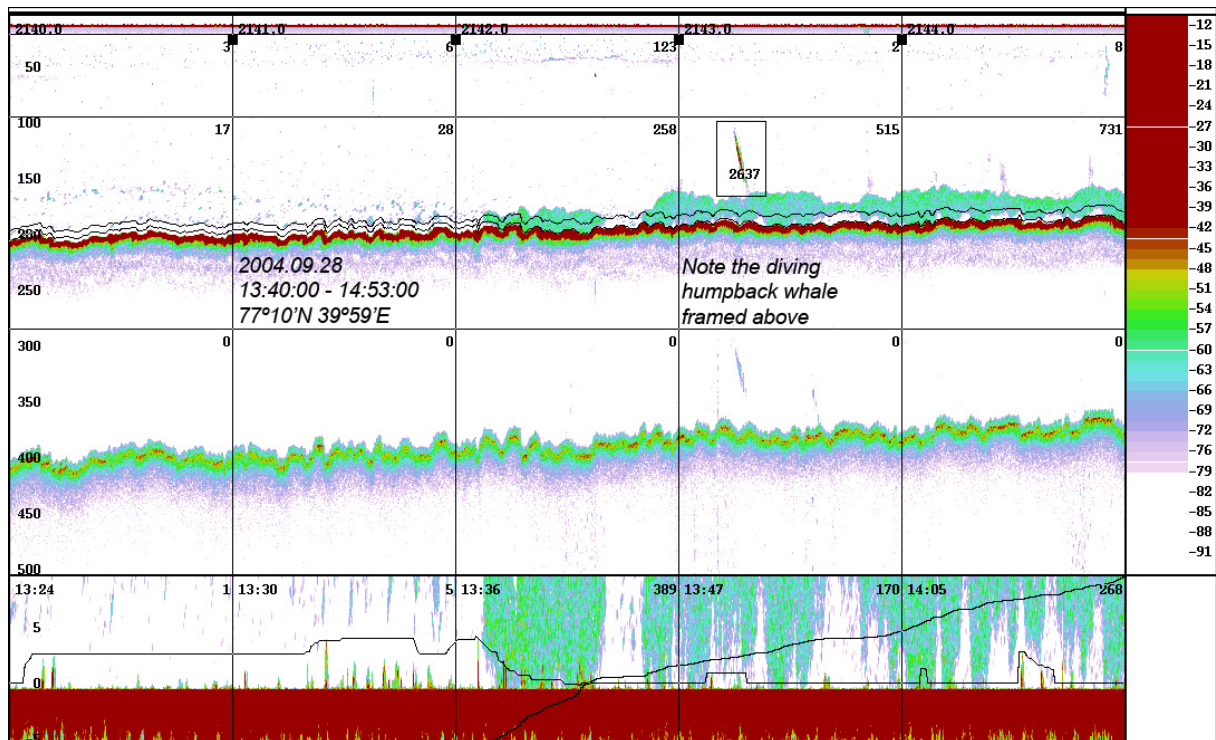


Figure 2.3.8 Echo-records of capelin in near-bottom concentrations 28.09.2004. Echogram obtained at Johan Hjort. Note the echo extending from the capelin layer; this is a diving humpback whale.

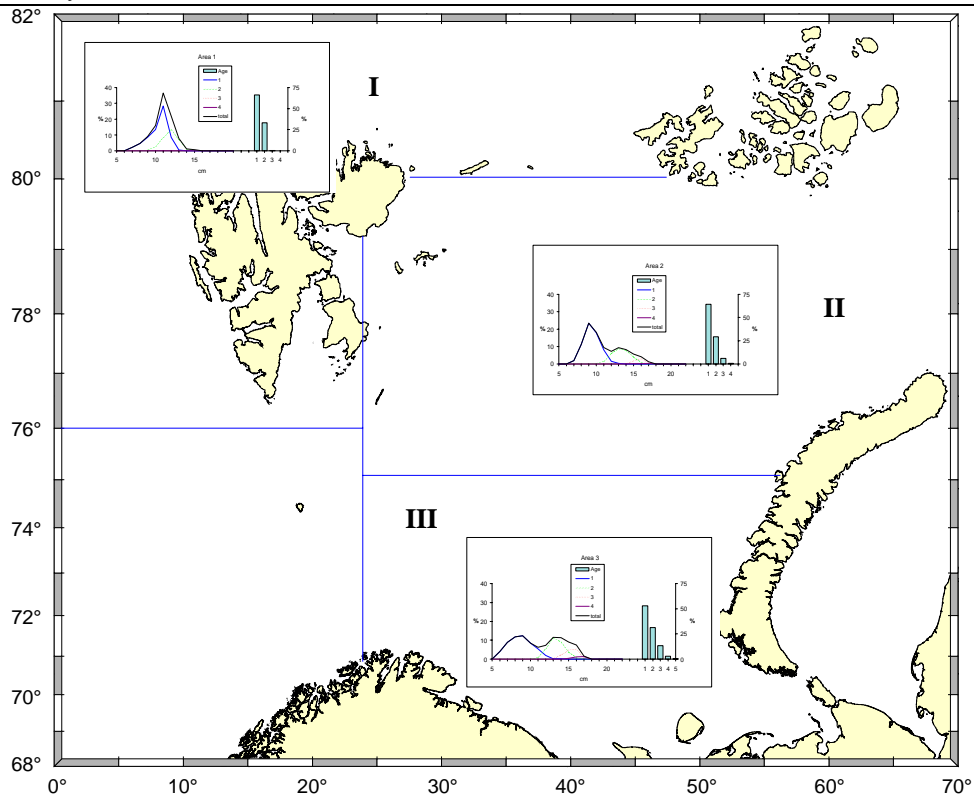


Figure 2.3.9 Age and length distribution of capelin in the three sub-areas used for stock size estimation August - October 2004.

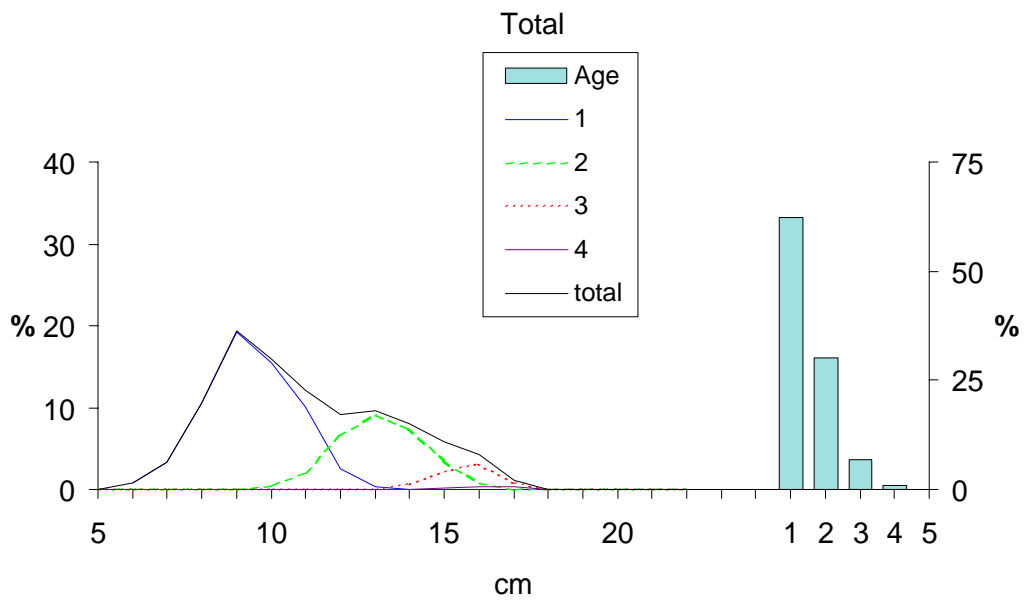


Figure 2.3.10 Total length and age distribution of capelin August - October 2004.

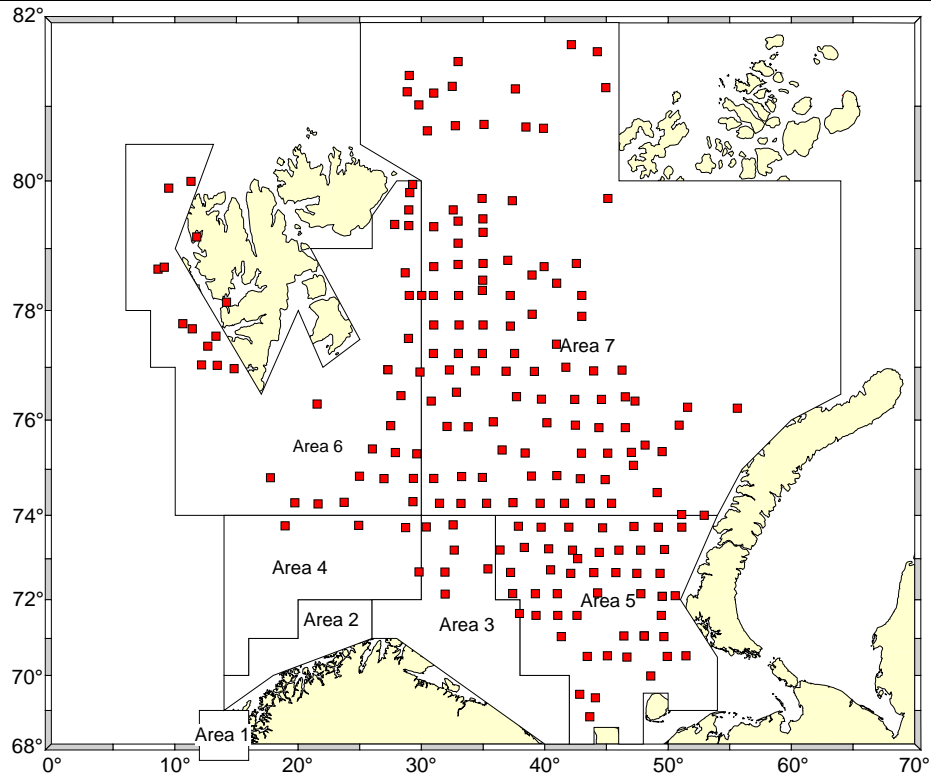


Figure 2.3.11 Bottom trawl stations with capelin in multispec areas 1-7, August - October 2004.

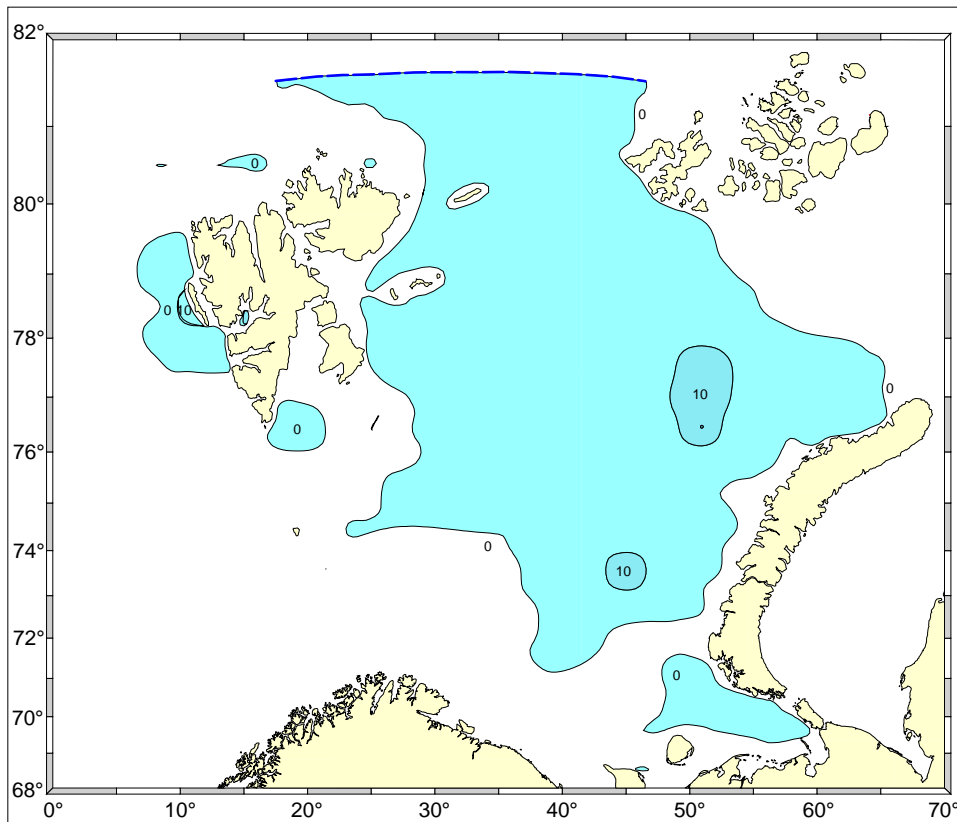


Figure 2.3.12 Estimated density distribution of one year old polar cod (t/ nautical mile²) August - October 2004.

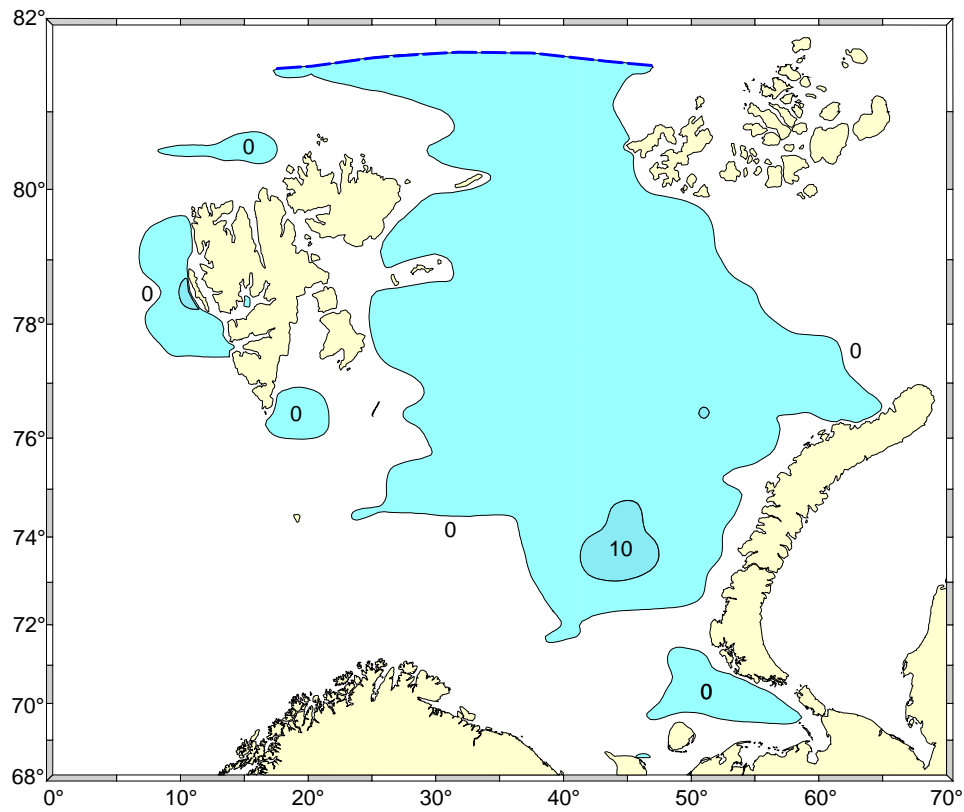


Figure 2.3.13 Estimated density distribution of two years old polar cod (t/ nautical mile²) August - October 2004.

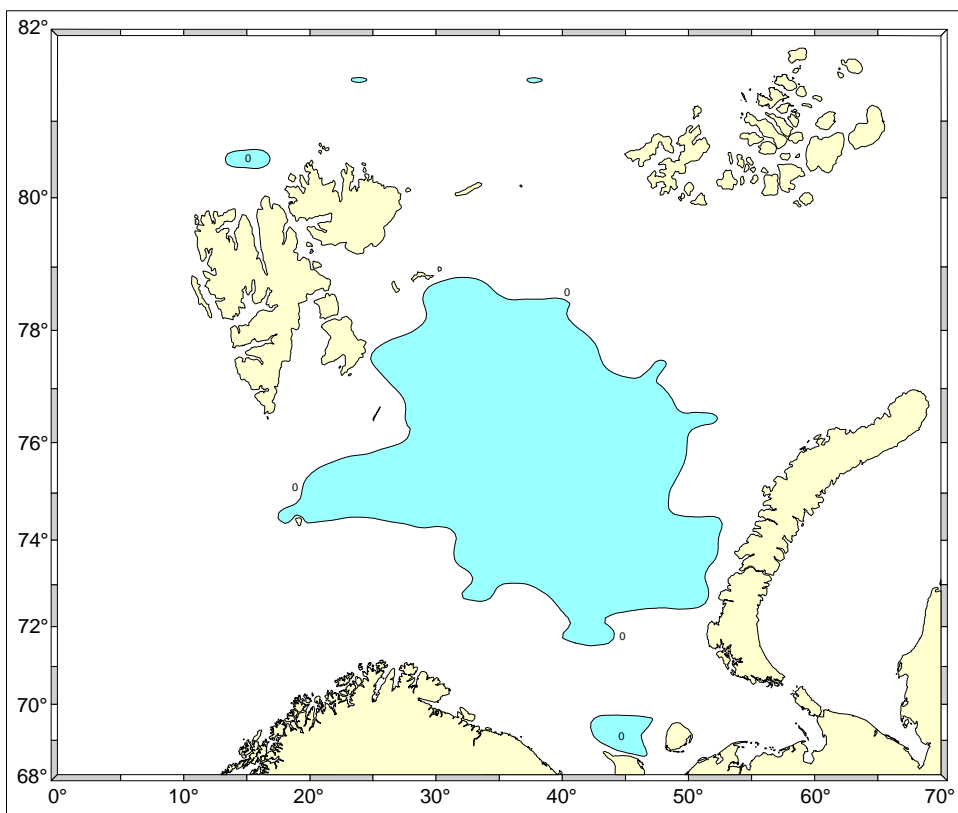


Figure 2.3.14 Estimated density distribution of three years old polar cod (t/ nautical mile²) August - October 2004.

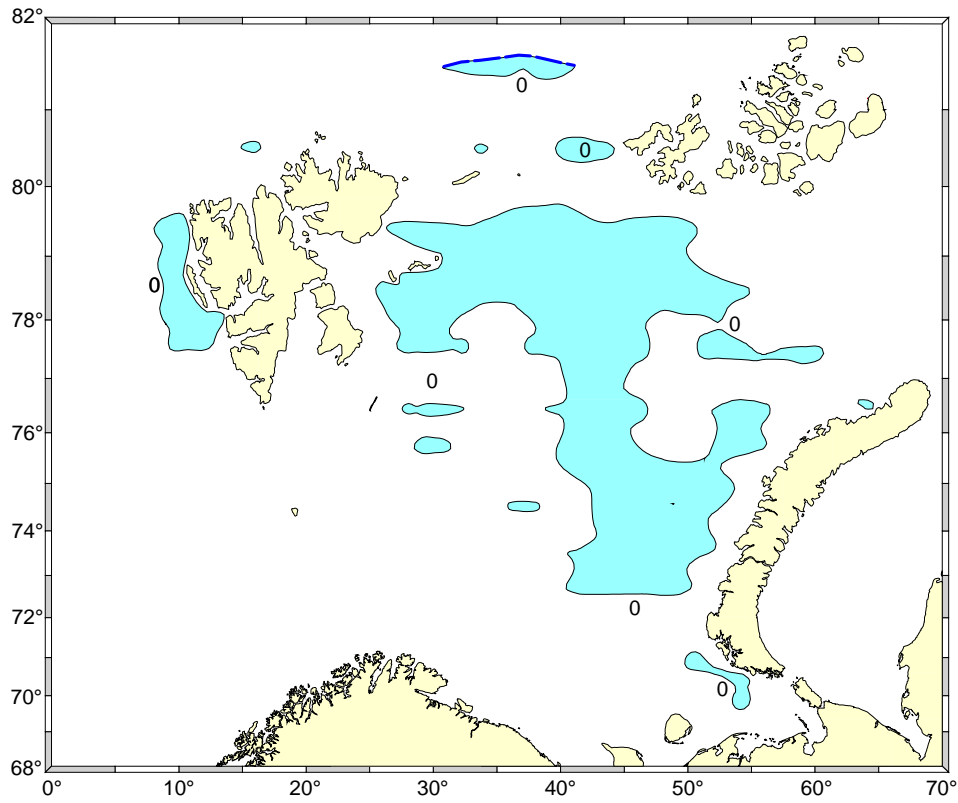


Figure 2.3.15 Estimated density distribution of four years old polar cod ($t/ \text{nautical mile}^2$) August - October 2004.

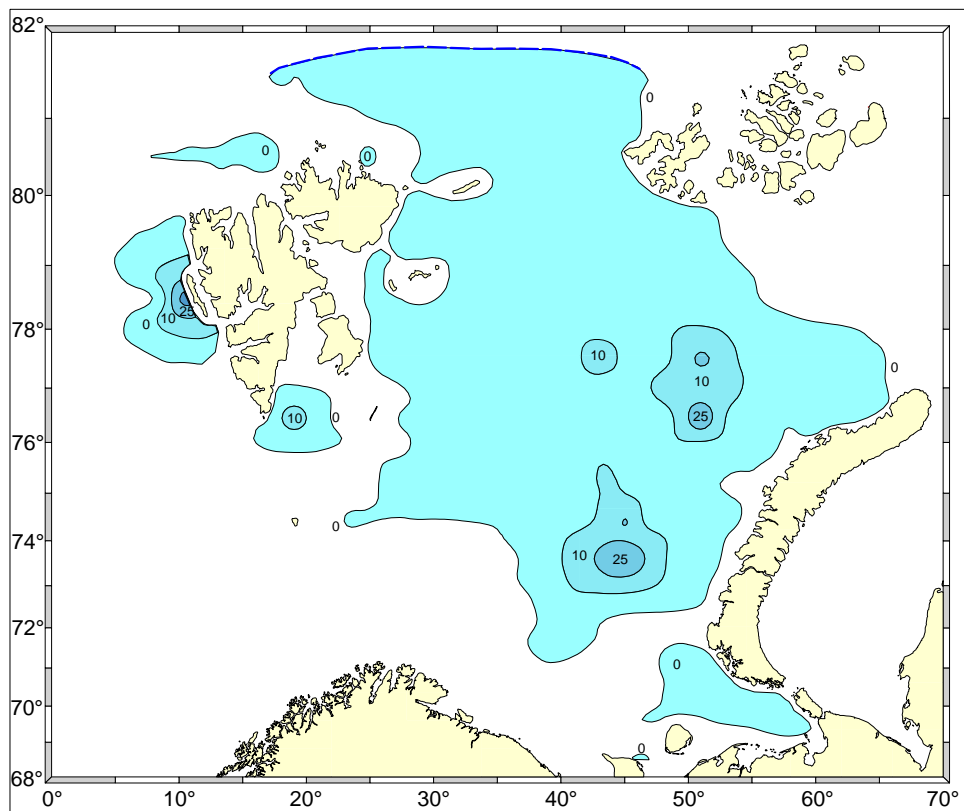


Figure 2.3.16 Estimated total density distribution of polar cod ($t/ \text{nautical mile}^2$) August - October 2004.

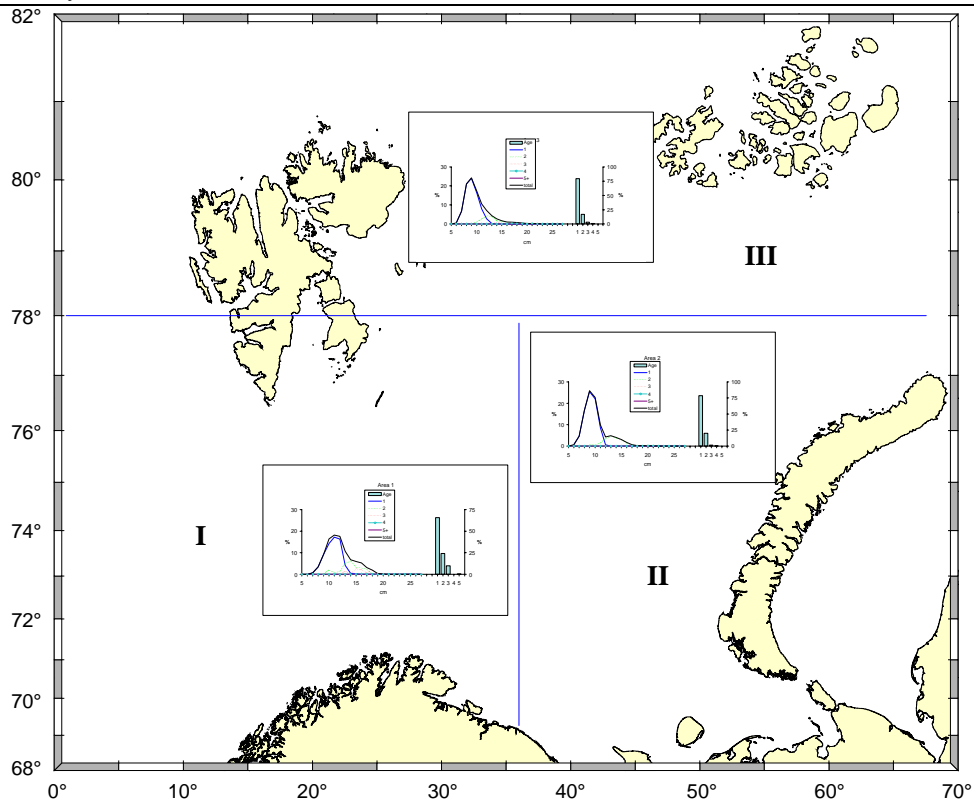


Figure 2.3.17 Length and age distribution of polar cod in the three sub-areas used for stock size estimation August - October 2004.

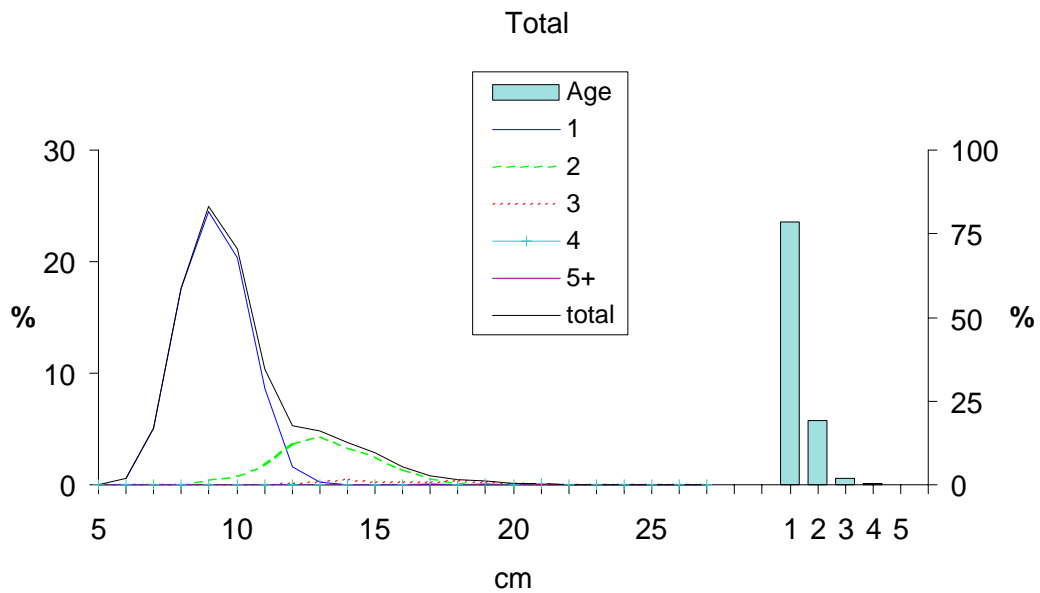


Figure 2.3.18 Total length and age distribution of polar cod August - October 2004.

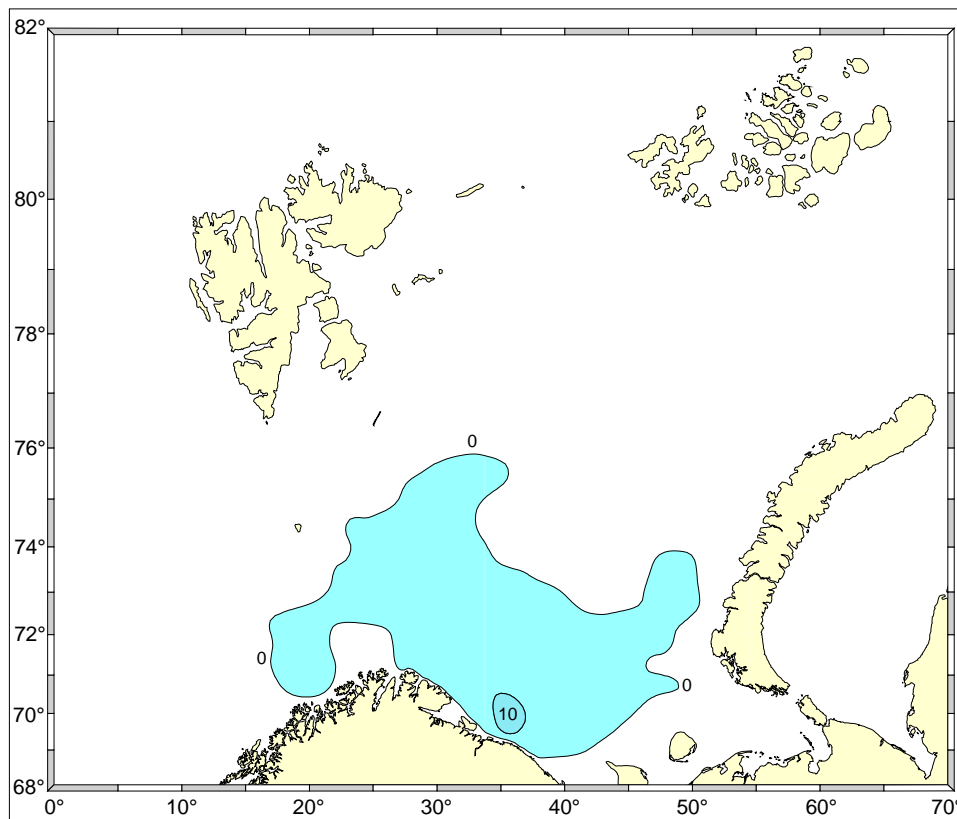


Figure 2.3.19 Estimated density distribution of one year old herring (t/ nautical mile²) August - October 2004.

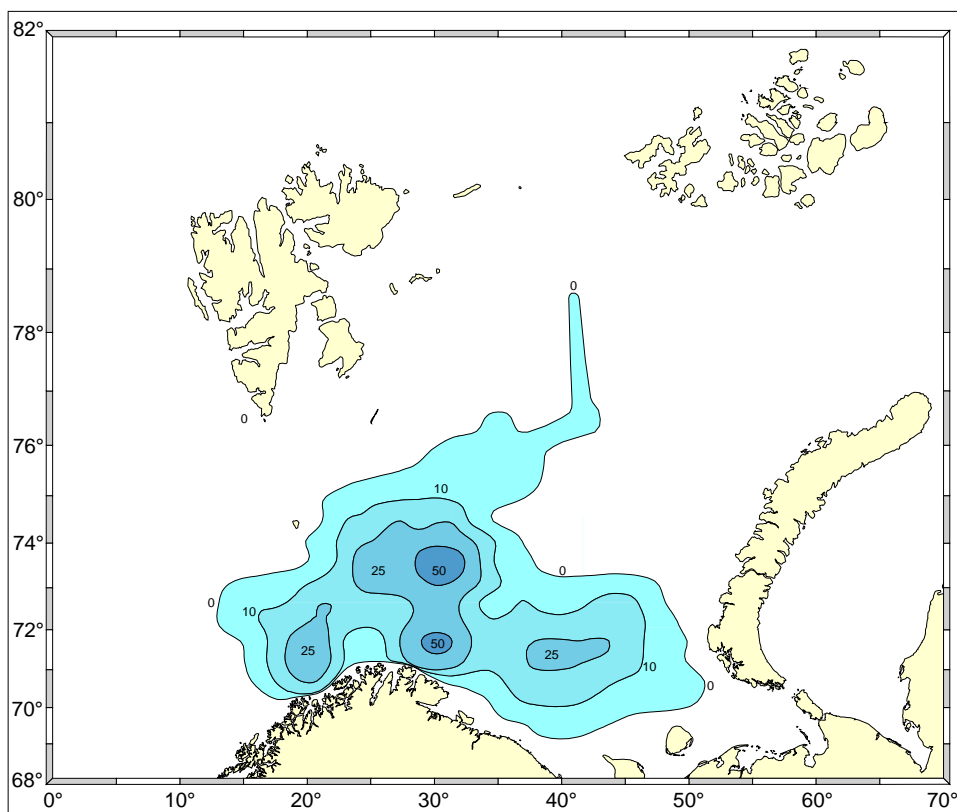


Figure 2.3.20 Estimated density distribution of two years old herring (t/ nautical mile²) August - October 2004.

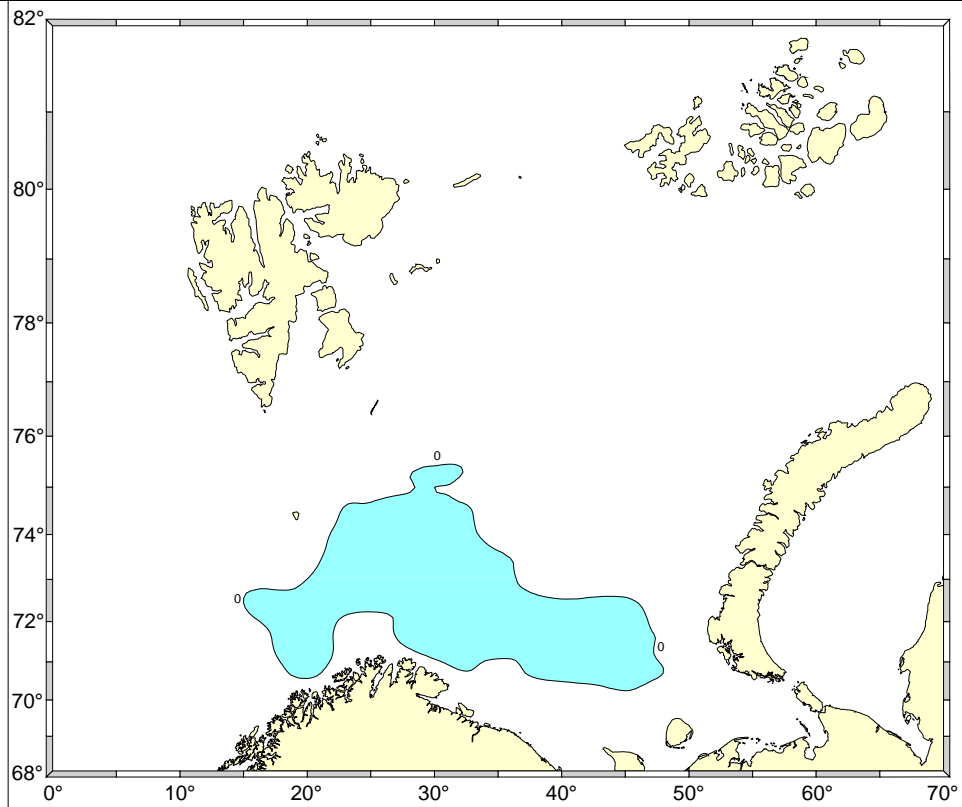


Figure 2.3.21 Estimated density distribution of three years old herring ($t/ \text{nautical mile}^2$) August - October 2004.

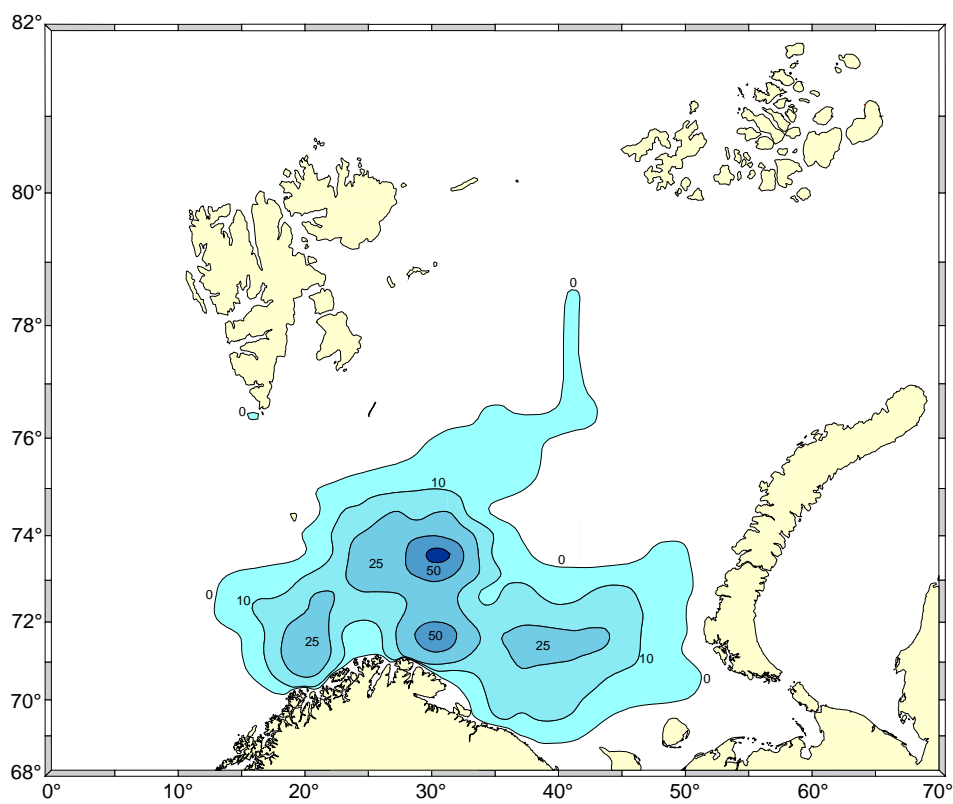


Figure 2.3.22 Estimated total density distribution of herring ($t/ \text{nautical mile}^2$) August - October 2004.

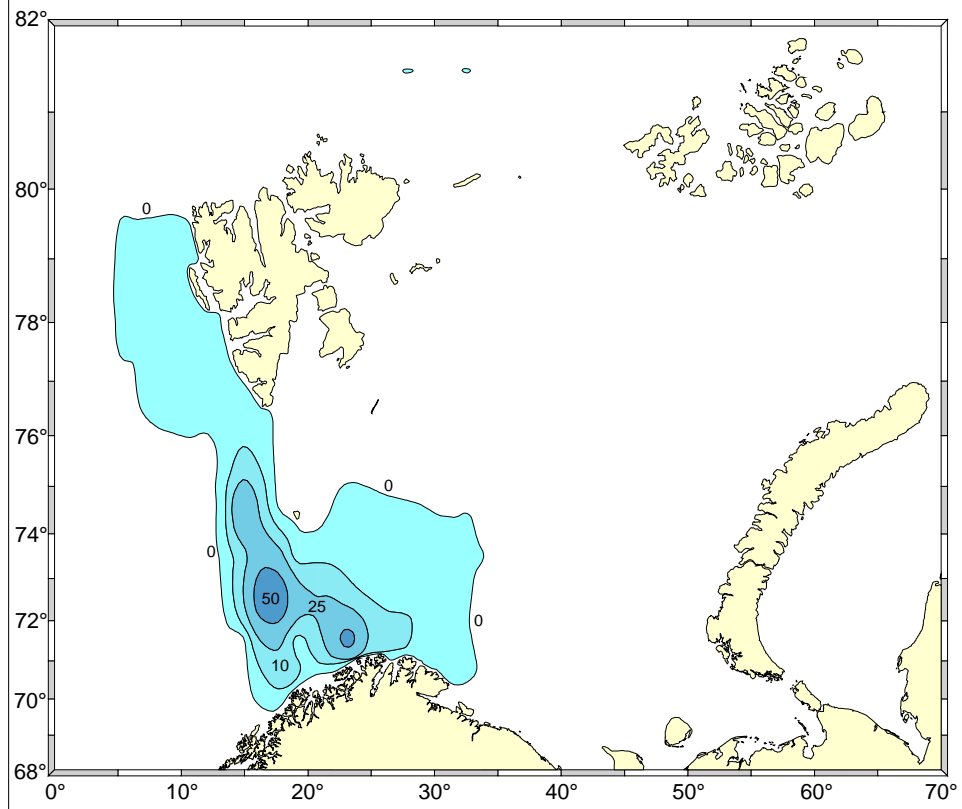


Figure 2.3.23 Estimated total density distribution of blue whiting (t/ nautical mile²) August - October 2004.