

Figure 2.1.1. Temperature ( $^{\circ}\text{C}$ ) at the Kola section

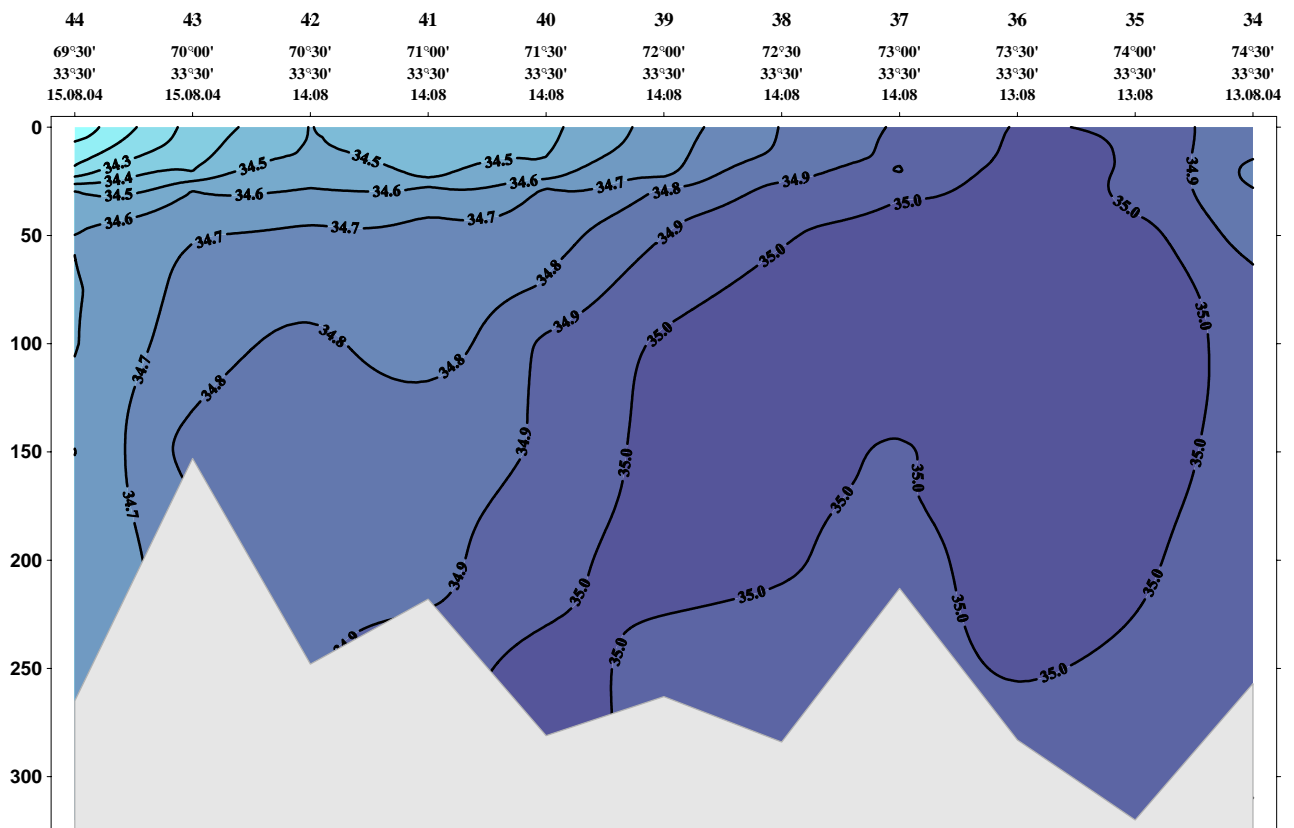


Figure 2.1.2. Salinity (S) at the Kola section

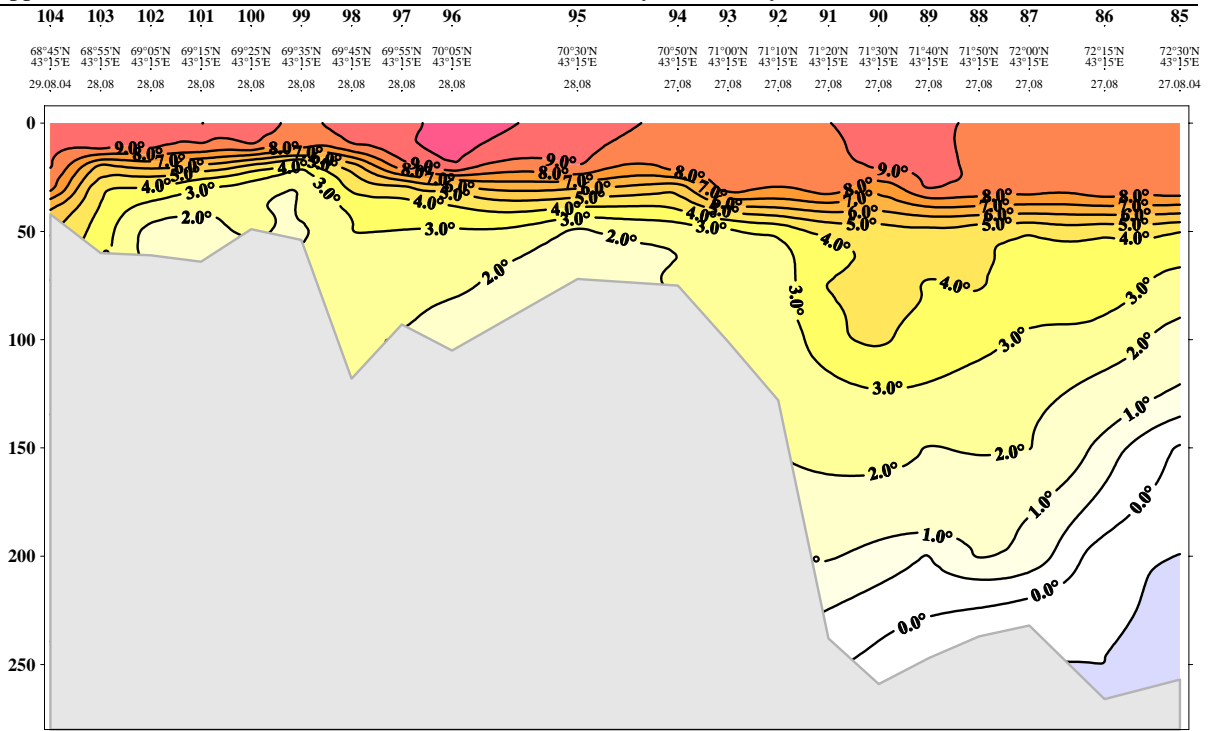


Figure 2.1.3 Temperature ( $^{\circ}$ C) at the Kanin section

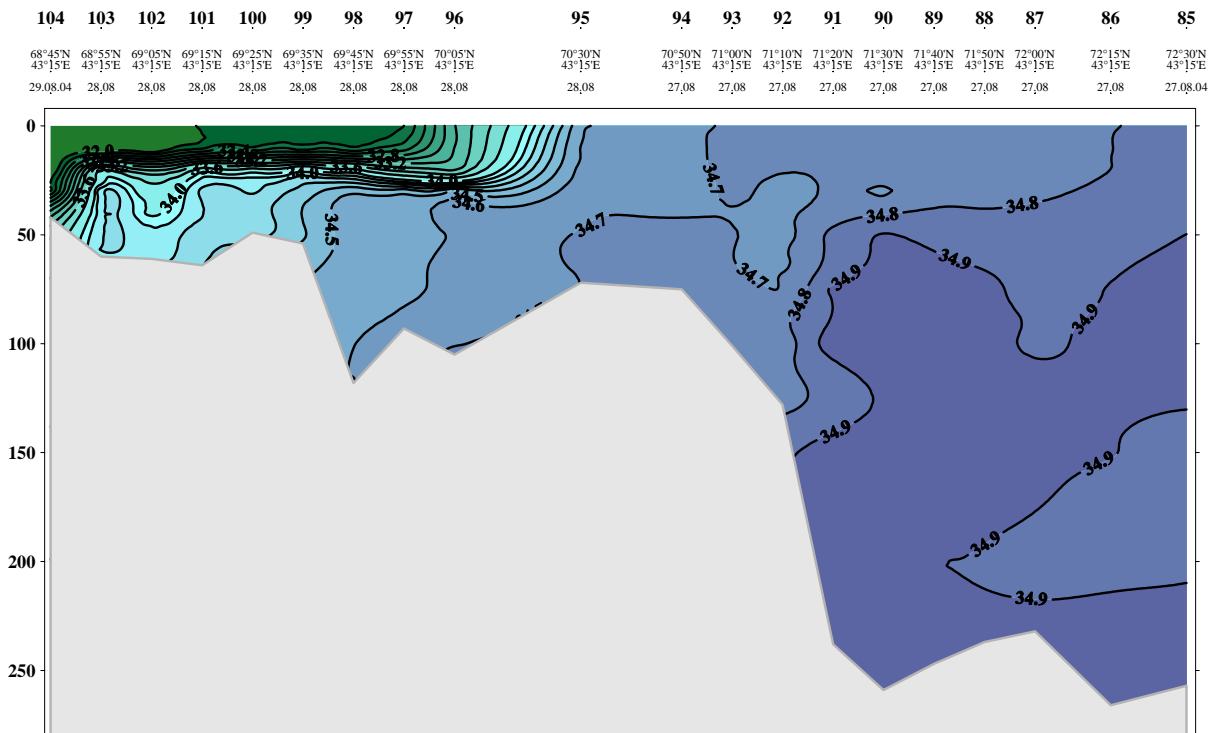


Figure 2.1.4 Salinity (S) at the Kanin section

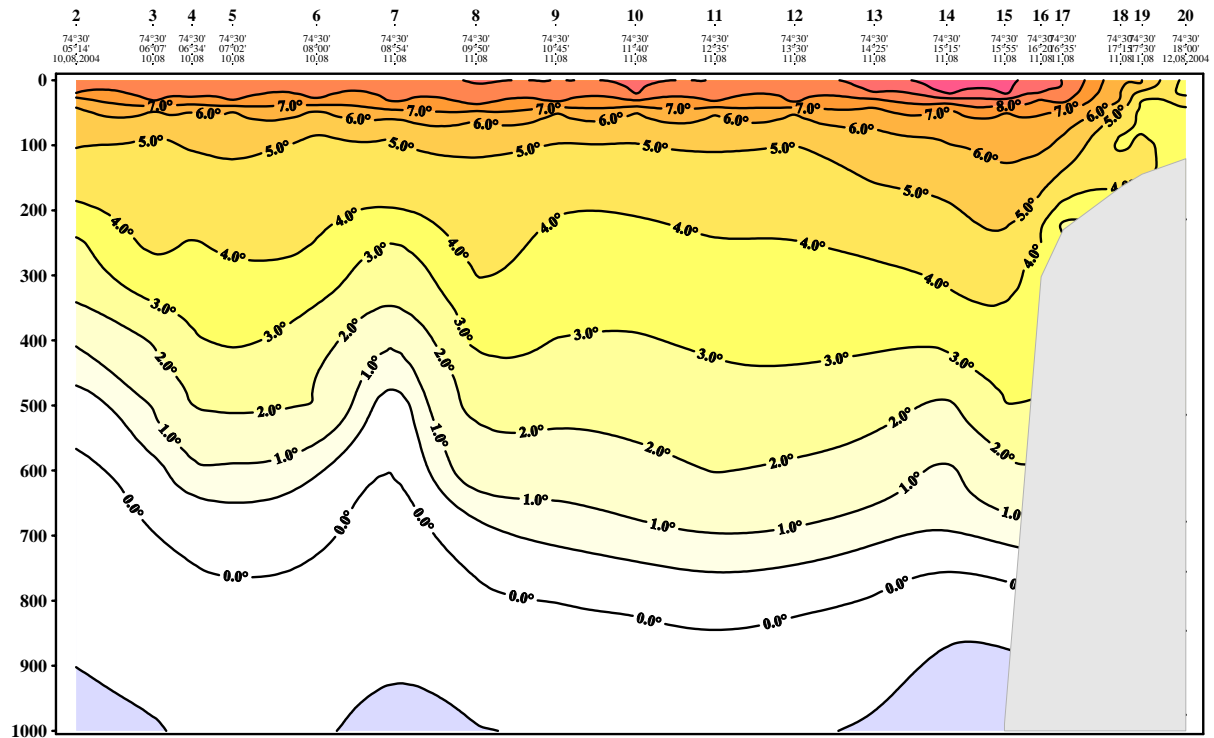


Figure 2.1.5 Temperature (°C) at the Bear Island-W section

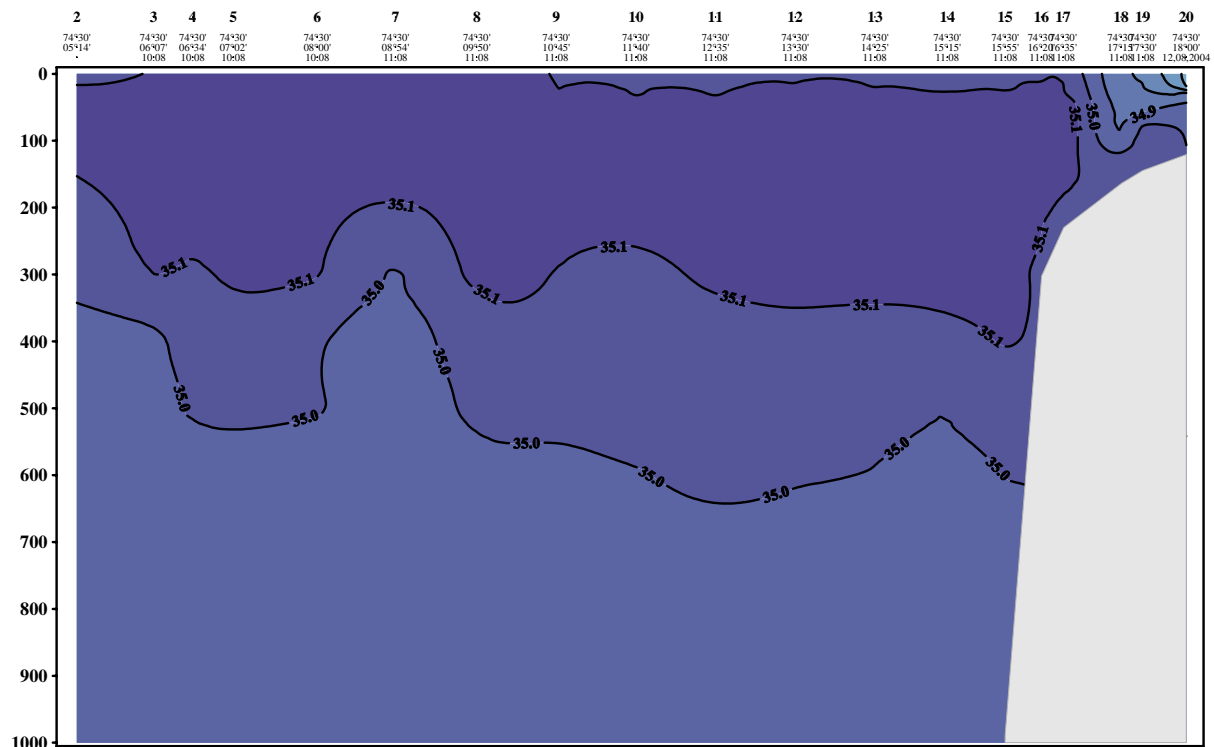


Fig 2.1.6 Salinity (S) at the Bear Island-W section

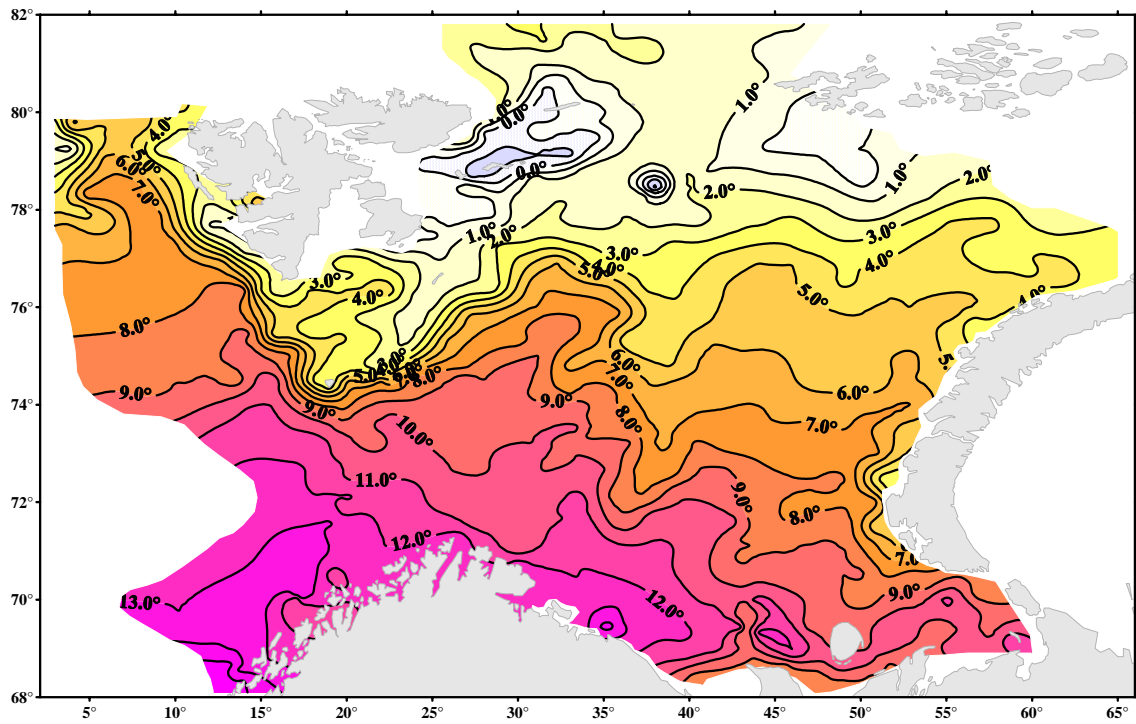


Figure 2.1.7 Distribution of temperature ( $^{\circ}\text{C}$ ) at the surface, August-October 2004

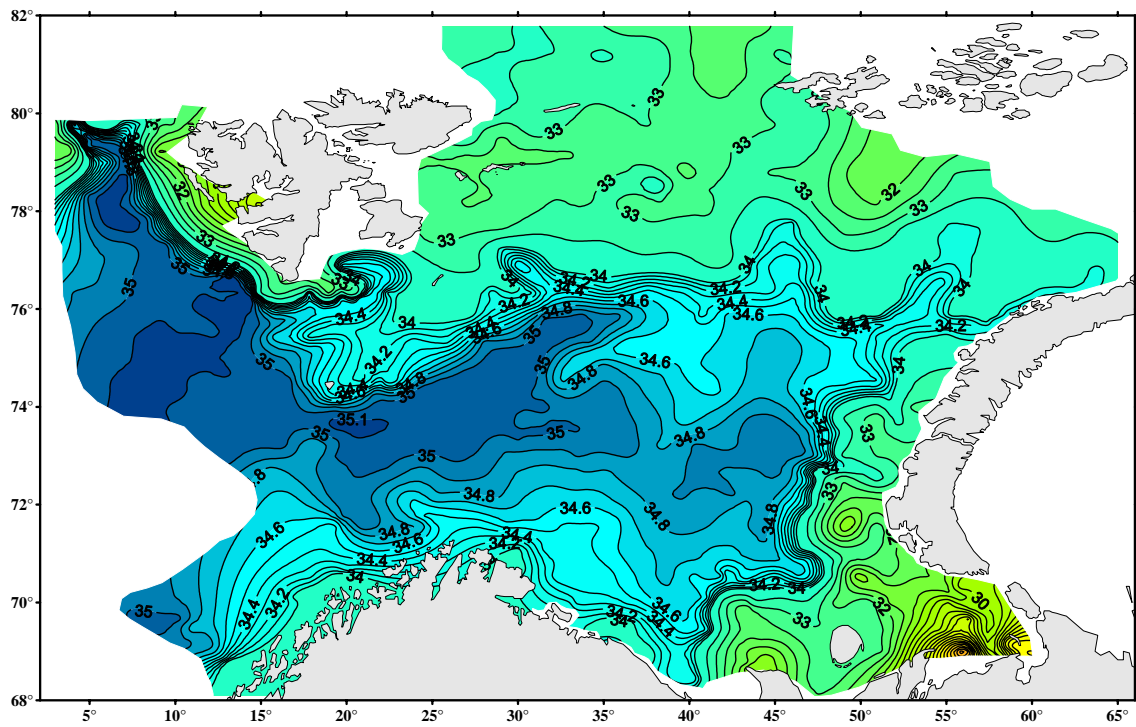


Figure 2.1.8 Distribution of salinity (S) at the surface, August-October 2004

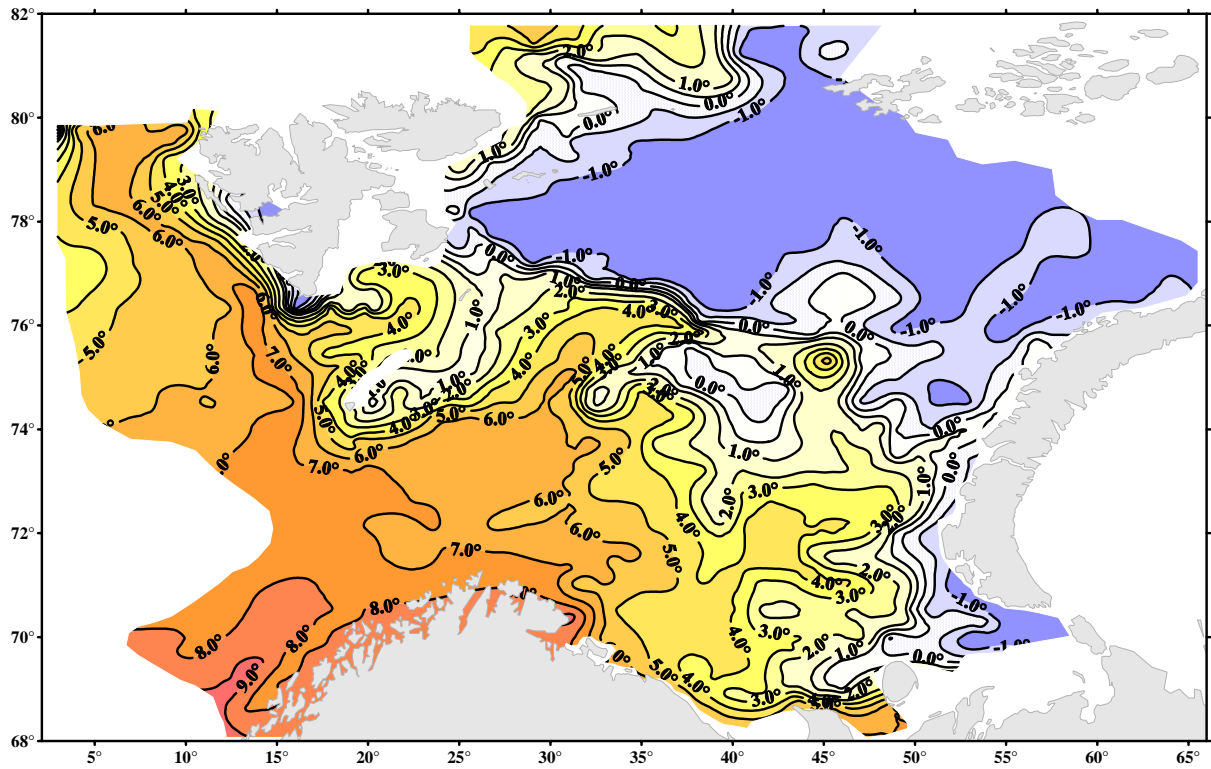


Figure 2.1.9 Distribution of temperature ( $^{\circ}\text{C}$ ) in 50 m depth, August-October 2004

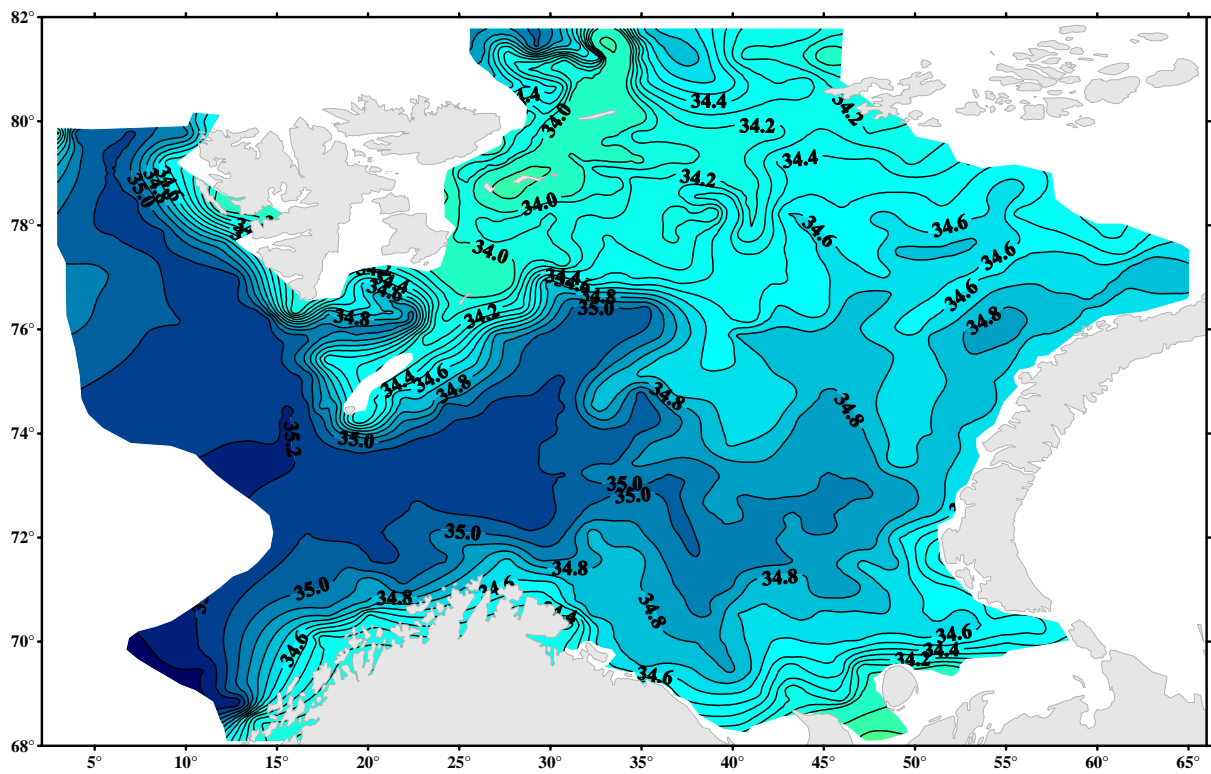


Figure 2.1.10 Distribution of salinity (S) in 50 m depth, August-October 2004

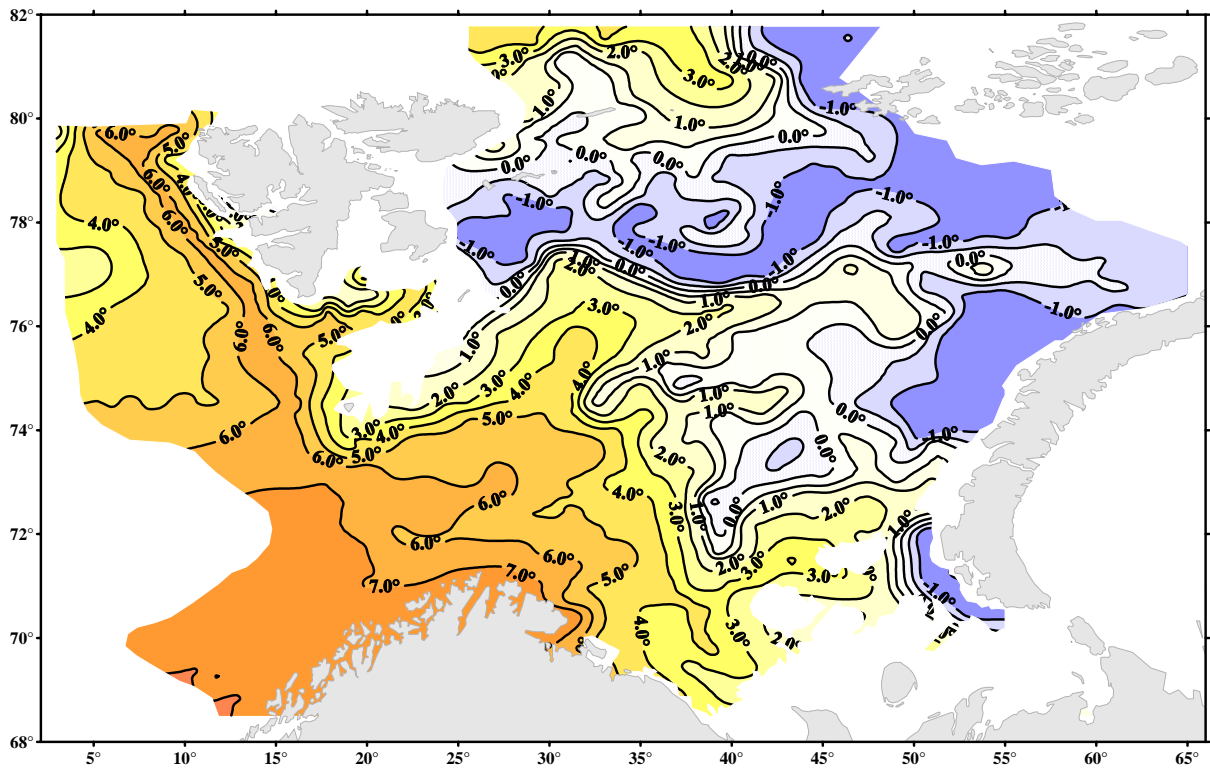


Figure 2.1.11 Distribution of temperature ( $^{\circ}\text{C}$ ) in 100 m depth, August-October 2004

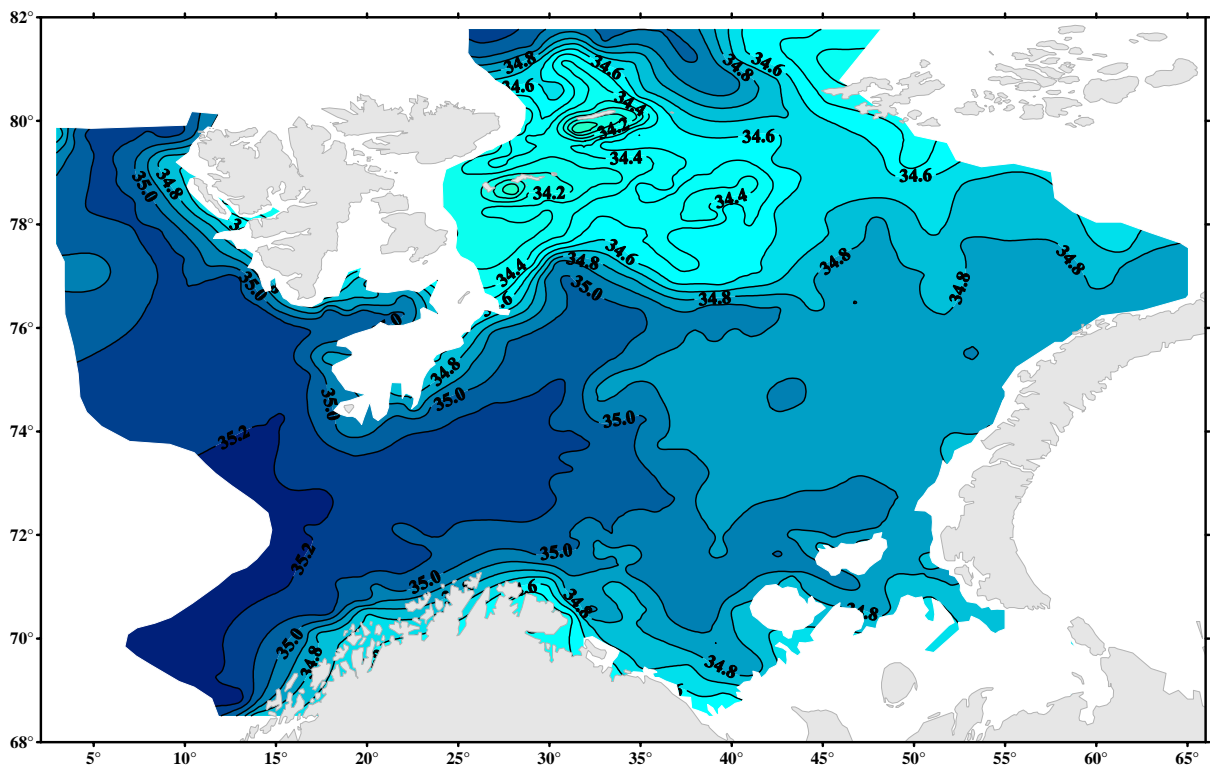


Figure 2.1.12 Distribution of salinity (S) in 100 m depth, August-October 2004

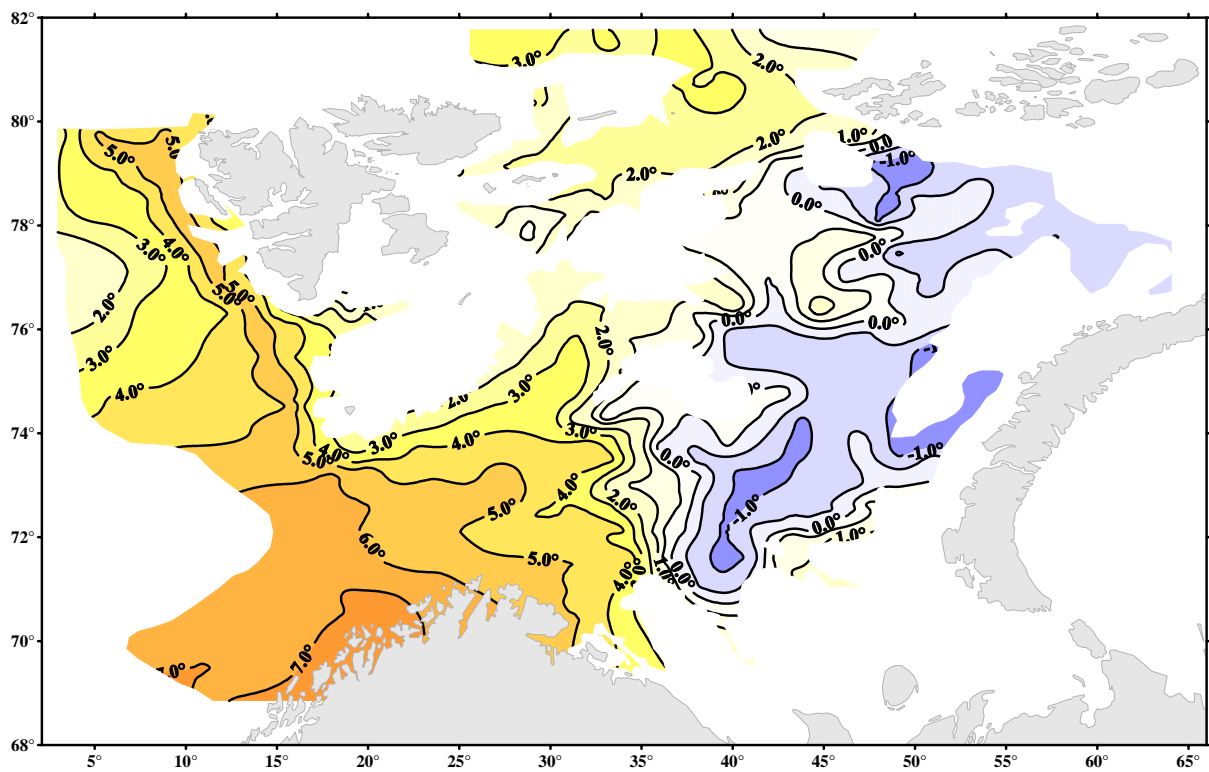


Figure 2.1.13 Distribution of temperature ( $^{\circ}\text{C}$ ) in 200 m depth, August-October 2004

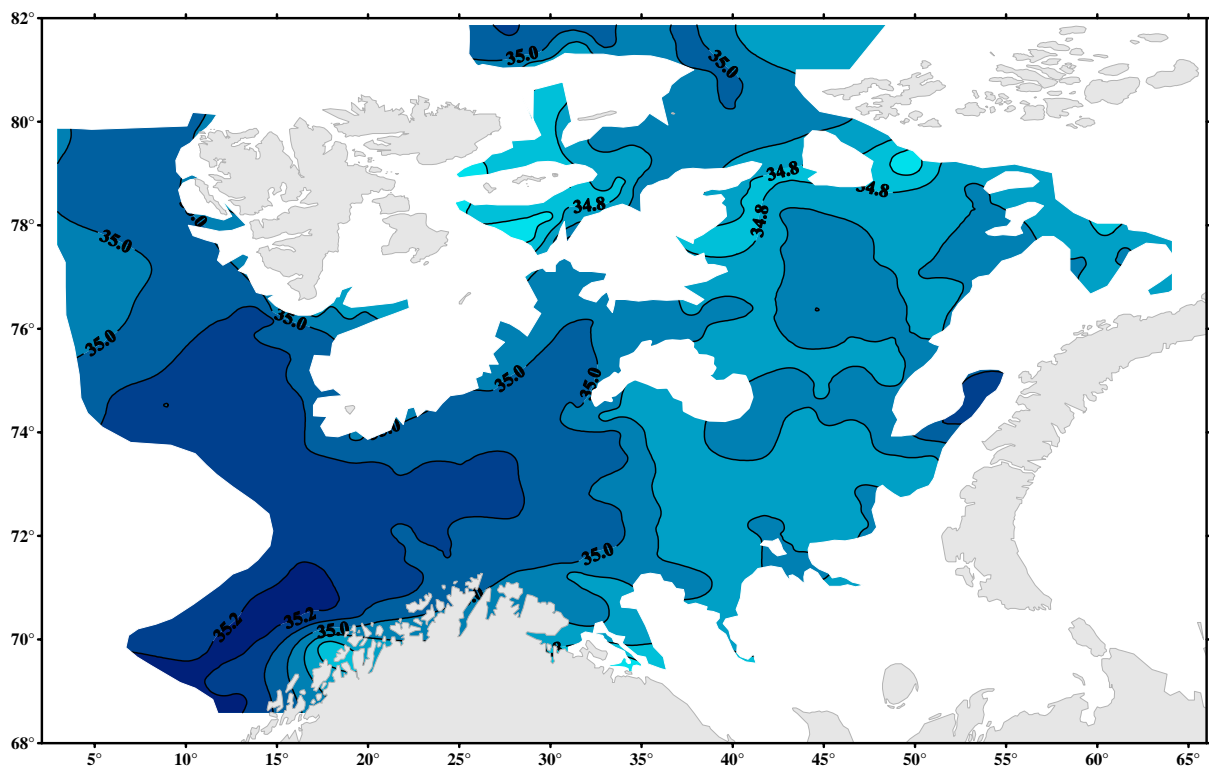


Figure 2.1.14 Distribution of salinity (S) in 200 m depth, August-October 2004

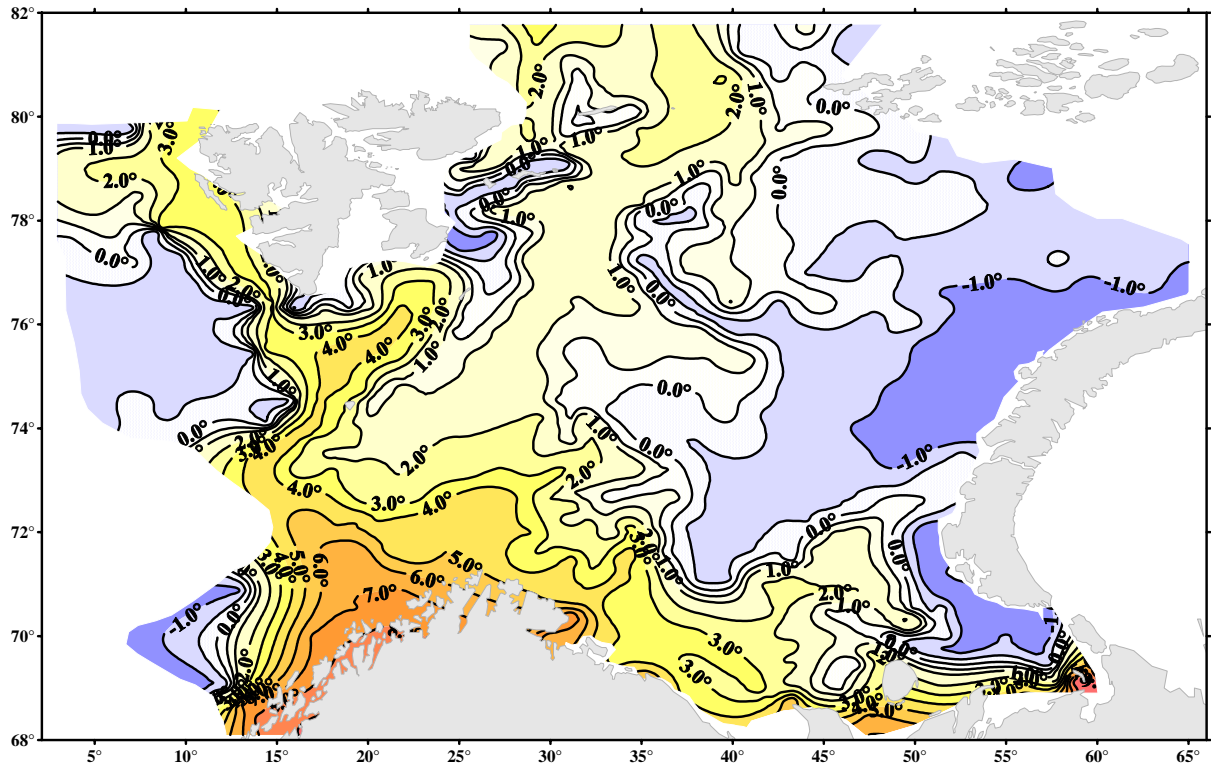


Figure 2.1.15 Distribution of temperature ( $^{\circ}$ C) at the bottom, August-October 2004

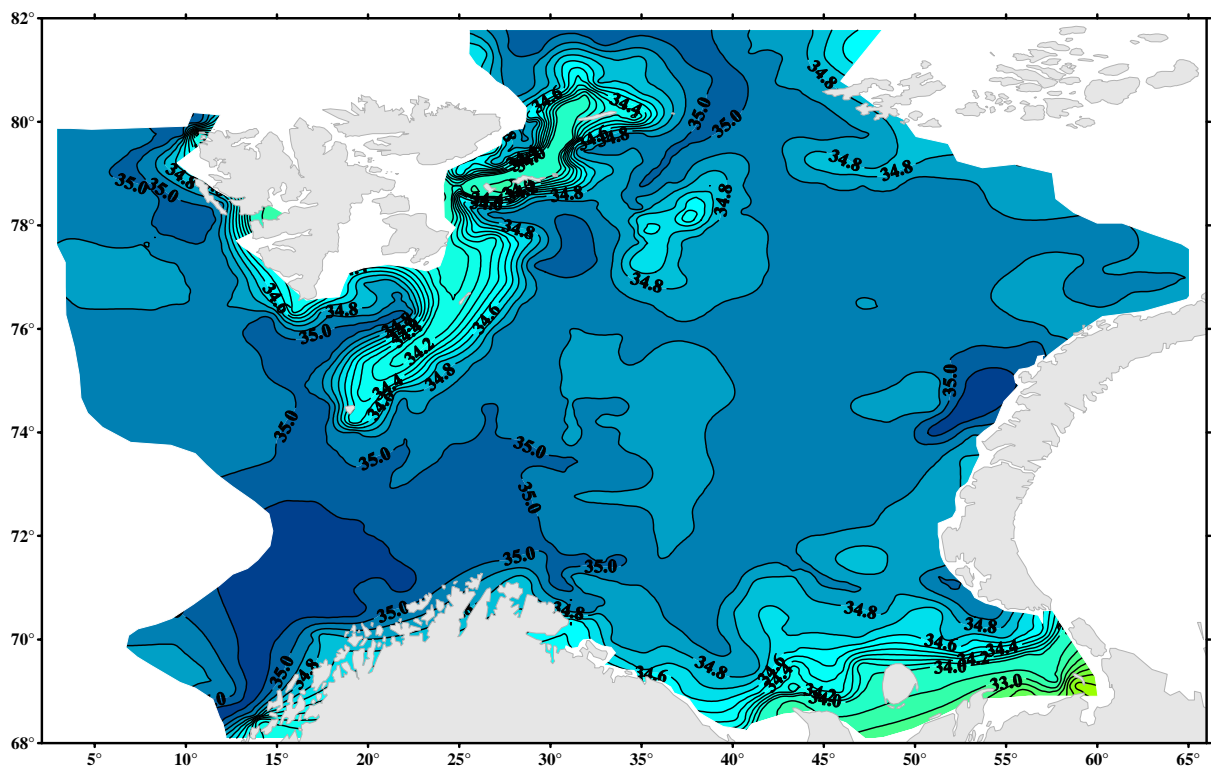


Figure 2.1.16 Distribution of salinity (S) at the bottom